

# RV AEGEAN SURVEYOR

Survey & Dive Support



## 65' Aluminum Hull Multipurpose Survey and Dive support Vessel

A. Surveyor is an excellent shallow draught survey vessel for day operations or limited overnight operations.

With a fully air-conditioned accommodation and a 24 inch NATO grid for mounting project equipment it is suitable to accommodate all types of survey equipment. The vessel has a dive platform the full width of the stern in addition to an A-Frame and telescoping Boom-Crane in order to support underwater operations.



## CHARACTERISTICS

65 ft length x 20 ft beam x 6 ft draft, range of 800 miles at 10 knots economy speed, 6 Berths accommodation. Covered Deck Space 18 ft x 26 ft with a removable towing bit. Vessel also has a tow hawser fairlead and rear controls for better positioning.

# RV AEGEAN SURVEYOR

## Survey & Dive Support



### GENERAL

<b>Name:</b>	<b>RV AEGEAN SURVEYOR</b>
<b>Type:</b>	Survey & Dive Support Vessel
<b>Rebuilt:</b>	2016
<b>Builder:</b>	Alumaship Corp
<b>Flag:</b>	GREEK
<b>Length overall:</b>	65 ft
<b>Breadth:</b>	22 ft
<b>Draft:</b>	6.0 ft
<b>Service Speed:</b>	10 knots
<b>Maximum Speed:</b>	19 knots
<b>Endurance:</b>	800 nautical miles @ 10 knots
<b>Crew:</b>	2 pax
<b>Accommodation:</b>	10 pax

### PROPULSION

Vessel is twin screw powered by GM 12V-71 TI main engines with a total of 1000hp. A 1.5 inch fire hose driven off 220 JABSCO

### ELECTRICAL POWER

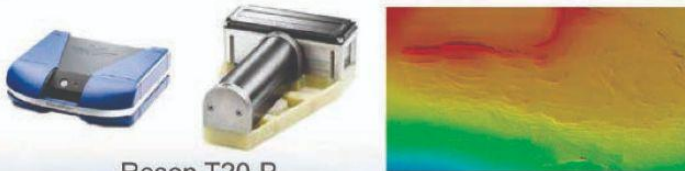
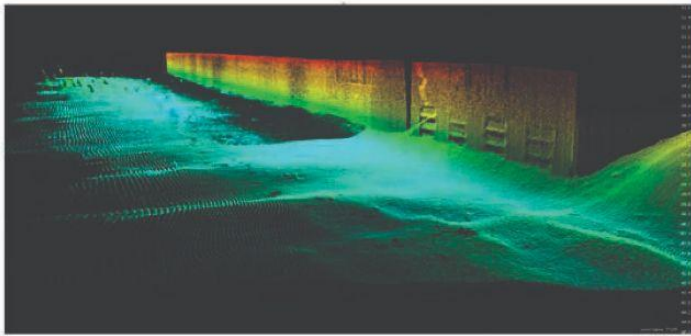
Isuzu 40KWDiesel Generator, 3 Phase 208V

### DECK EQUIPMENT

A-frame, crane, winches etc. Refer to separate inventory, exterior fuel tank 200 gallons

### SURVEY EQUIPMENT

Reson T20-P MBES  
Edgetech 2000-DSS System (combined SSS/SBP)  
Geopulse SBP  
Edgetech 4125 SSS  
TrackLink 1500 USBL  
C-NAV 3050 Differential GPS  
Valeport mini SVP  
F-185 MRU  
Geometrics G-882 Magnetometer  
over-the-side pole or hull mount



Reson T20-P



# RV AEGEAN SURVEYOR

## Survey & Dive Support



### CRANE FEATURES

- Automatic overload protection system
  - o Keeps people, equipment, and loads safer
- Full, non-continuous power rotation
  - o -370° movement for maximum versatility in lifting
- Capable of lifting at 100% in all positions on Titan® crane bodies with outriggers
  - o Maximized capacity for lifting
- -14° to +75° boom elevation
  - o Greater work area capability with maximum range of working angle limits
- Small sheave
  - o Fits into tighter spaces

### CRANE SPECIFICATIONS

Capacity Rating	6,000 lb (2,721 kg)
Maximum lifting capacity of 6,000 lbs.	35,000 ft-lbs (4.84 tM)
Weight	2,271 kg @ 5' 0" (1.52 m)
Stowed Boom Length	1,390 lbs (680.4 kg)
Extended Boom Length	10' 4" (3.96 m)
Width	20' 4" (6.2 m)
Height	1' 11¼" (.59 m)
Base Plate Dimensions	2' 11¼" (.83 m)
	16.75" x 16.75" (.43 m x .43 m)
Single Line Speed	60 ft/min (18.3 m/min)
Boom Down	11-15 seconds (full stroke of cylinder)
Boom Retract	10-14 seconds (full stroke of cylinder)
360° Boom Rotation	34-56 seconds
Hydraulic Requirements	8 gpm (30 L/min) at 2,750 psi (189.6 bar)
Cable (aircraft quality cable) Standards	80 ft (24.38 m) of 5/16" (8 mm) OSHA 1910.180 ANSI B30.5



### BRIDGE EQUIPMENT

VHF/DSC	Standart Horizon GX 2150 with AIS receiver
Echosounder	Standart Horizon GX 1260 S
Auto Pilot	FURUNO FCV 600 L
Radar	SIMRAD AC 42 N
	FURUNO 1934 C with Display
	NAVNET
	RDP-149 with GPS RECEIVER
	GP-310
	B and SEA CHARTS (SD card)
GPS Plotter	Standart Horizon CP 500 with sea charts (NT MAX)
Magnetic Compass	SAURA
FLUX GATE	SIMRAD RC 42 N
FBB/SAT PHONE	SAILOR 150

### BOW THRUSTER SPECIFICATIONS

Model	WESMAR V2-10M
Motor Size	48VDC 13hp
Tunnel Size	250mm

#### Dimensions

A	15.21"	(386mm)
B	15.92"	(421mm)
C	7.79"	(198mm)
PROP	9.84"	(250mm)



Mojave ROV

The MOJAVE ROV system is the most powerful observation ROV for its size (Inspection / Free Flying). Compact, ergonomic design and light weight construction allow for rapid set up and deployment using any domestic power supply. The MOJAVE can be operated from a wide range of platforms. With world beating subCAN control & diagnostics system and proven thruster reliability, MOJAVE sets the standard by which the competition will be judged.

Versatile, The MOJAVE can be supplied with a complete range of specialist tooling / sensor skids for use Offshore or Inshore Oil & Gas, Scientific, Port Security, Military, Civil Engineering and numerous other applications.

Vehicle dimension & weight	Data logging	Standard equipment
Length 1750 mm	Desktop Computers & HDD	1x Tilt Unit with Basic Camera
Width 1060 mm	Apple Laptop video processor	LED Lighting
Height 1220 mm		Depth Sensor
Launch weight 500 kg	<b>Power requirements</b>	Compass / Pitch / Roll
Max speed 3.5 knots	ROV Surface control and Power distribution units (SCU)	Survey JBox
Payload 105 kg	110 - 230VAC @ 5KW	
Forward thrust 220 kgf	<b>Automatis functions</b>	
Vertical thrust 75kgf	Auto-Heading accuracy +/- 5°	
Max depth rating 1500m	Depth control +/- 0.5 m	
	Attitude control +/- 5°	
<b>Surface control unit</b>		
Transportable Rack including:	<b>Service team</b>	
Control unit	12 hours/day operations	
Video screen	> 1x Pilot / Technician	
Analog to digital converter	> 1x Supervisor	
HD/DVD Video recorder		



Options			
• Altimeter	• Acoustic Camera	• Recovery Bullet and Lock Latch	• Client junction box for quick change out of equipment
• CP Probe	• Acoustic Transponder	• Various electric & hydraulic manipulator options	
• DP / INS Skid	• Sonar (Various Options)		
• Cleaning Brush	• Recovery Beacon and Flasher		
• Second Camera			